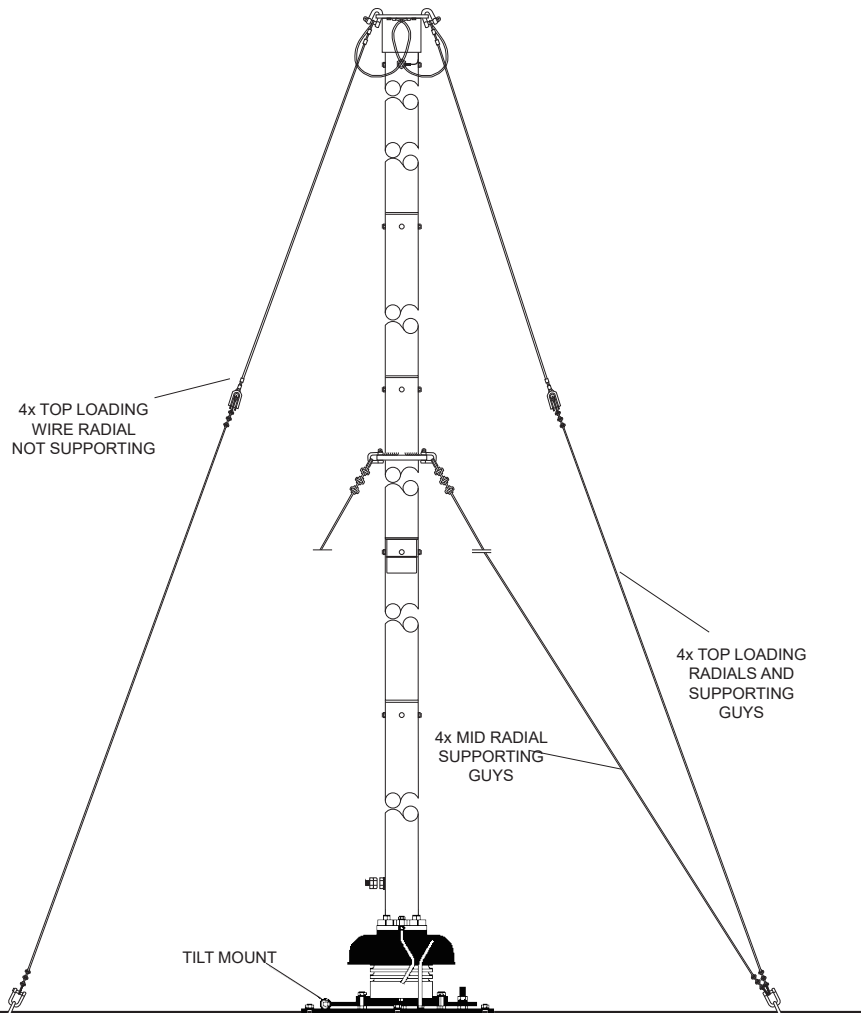


REV	MODIFICATIONS	DRAWN BY	CHECKED BY	DATE
A	CREATION	HE	HE	12/13/2011



Colour  
 Frequency Range  
 Overall Length  
 Top Loading  
 Radiator Diameter  
 Pattern  
 Polarisation  
 Power Capability  
 Wind Survival  
 Mounting  
 Footings  
 Guy Radius  
 Earth Mat  
 Erection  
 Operating Frequency  
 System Efficiencies  
 System Bandwidth  
 Effective Base Capacitance  
 Coupler Coil  
 Earth Resistance  
 Calculated Power for 100w input  
 Unattenuated Field Intensity  
 perfect ground, 100w input  
 Weight

Colour to Order  
 250-3000 kHz (with suitable ATU)  
 15m (50ft)  
 4 x 7m (23ft) non supporting top radials, 4 x 7m (23ft) top loading guy supporting radials and a loading coil  
 80mm (3.1 in)  
 Omnidirectional  
 Vertical  
 Below 500 KHz: 100w CW plus 100% amplitude modulation;  
 500-3000 KHz: 600w PEP/400w CW; higher power to order  
 Antenna survival : 216 km/h (134 mph/60 m/s) no ice, 160 km/h (100 mph/44.5 m/s) 20mm radial ice  
 Base mounting plate with integral insulator and connections for earth mat; hinged base plate optional  
 Concrete footings are required to suit ground conditions: typically Mast 300 x 300 x 600 mm deep (11.8 x 11.8 x 23.6 in), Guys (4) 600 x 600 x 600 mm (23.6 x 23.6 x 23.6 in) depending on ground type  
 9m (29.5ft) minimum  
 Systems available to suit site conditions (request a quotation)  
 Easily erected by two men with a small winch and a gin pole when using hinged base plate option  
 300 kHz (for example)  
 Antenna and Earth only 4.3%; system (incl. coupler) 1.9%  
 1.759 kHz at -3 dB  
 405 pf

Q	Inductance	Reactance	Resistance
200.00	695µHy	1310Ω	6.6Ω
1.0Ω			

Losses: coupler coil 56.1w, top coil 29.1w, earth 8.6w, mast 4.3w;  
 Radiated Power: 1.9

1km	1 N/Mile	50 N/Miles
13.0 Mv/M	7.1 Mv/M	141.3µv/M

Unpacked: 74kg (162.8 lbs); packed 117 kg (257.4 lbs), excluding optional hinged base; hinged base packed 30kg (66 lbs)

UNLESS OTHERWISE SPECIFIED DIMENSIONS : mm ANGLES : d.			
CUSTOMER N°	TITLE : Professional high quality LF/MF guyed antenna system		
FILE N°			
	SIZE A4	<b>NMO-01-0062</b>	REV A
	SCALE : N.D.		Prod.   Doc.
			SHEET 1 of 1