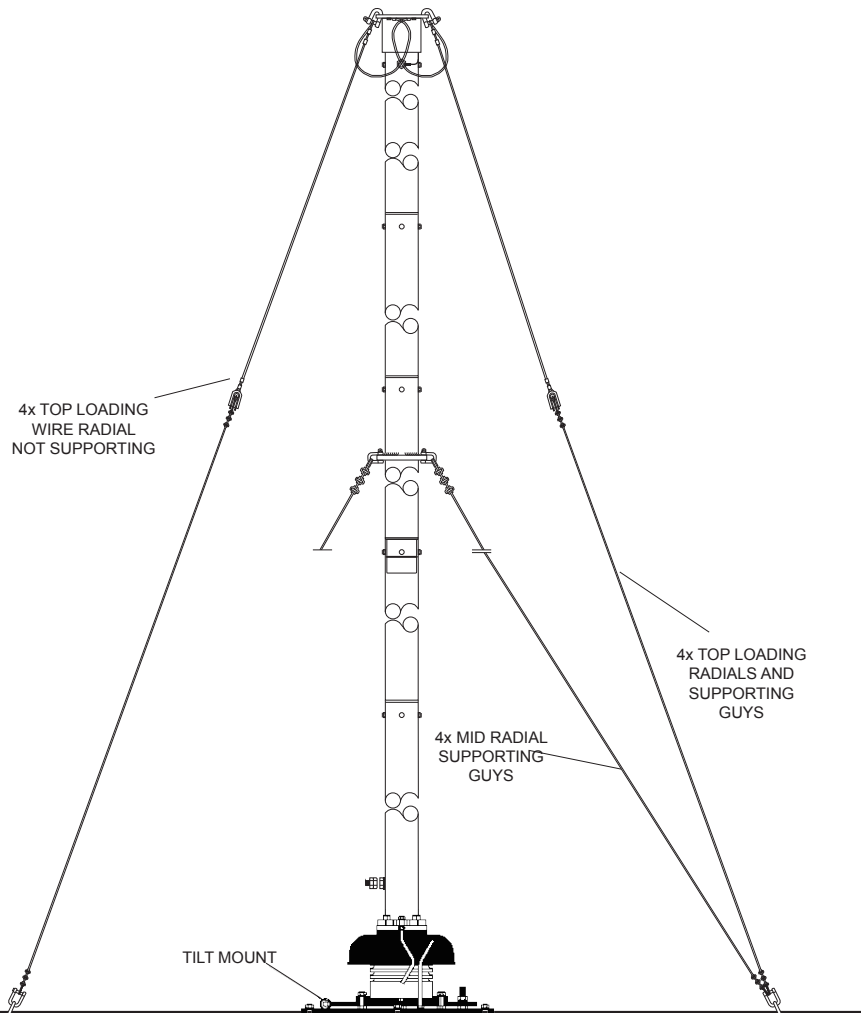


REV	MODIFICATIONS	DRAWN BY	CHECKED BY	DATE
A	CREATION	GI	GI	12/13/2011



Colour
 Frequency Range
 Overall Length
 Top Loading
 Radiator Diameter
 Pattern
 Polarisation
 Power Capability
 Wind Survival
 Mounting
 Footings
 Guy Radius
 Earth Mat
 Erection
 Operating Frequency
 System Efficiencies
 System Bandwidth
 Effective Base Capacitance
 Coupler Coil
 Earth Resistance
 Calculated Power for 100w input
 Unattenuated Field Intensity
 perfect ground, 100w input
 Weight

Colour to Order
 250-3000 kHz (with suitable ATU)
 15m (50ft)
 4 x 7m (23ft) non supporting top radials, 4 x 7m (23ft) top loading guy supporting radials and a loading coil
 80mm (3.1 in)
 Omnidirectional
 Vertical
 Below 500 KHz: 100w CW plus 100% amplitude modulation;
 500-3000 KHz: 600w PEP/400w CW; higher power to order
 Antenna survival : 216 km/h (134 mph/60 m/s) no ice, 160 km/h (100 mph/44.5 m/s) 20mm radial ice
 Base mounting plate with integral insulator and connections for earth mat; hinged base plate optional
 Concrete footings are required to suit ground conditions: typically Mast 300 x 300 x 600 mm deep (11.8 x 11.8 x 23.6 in), Guys (4) 600 x 600 x 600 mm (23.6 x 23.6 x 23.6 in) depending on ground type
 9m (29.5ft) minimum
 Systems available to suit site conditions (request a quotation)
 Easily erected by two men with a small winch and a gin pole when using hinged base plate option
 300 kHz (for example)
 Antenna and Earth only 4.3%; system (incl. coupler) 1.9%
 1.759 kHz at -3 dB
 405 pf

Q	Inductance	Reactance	Resistance
200.00	695µHy	1310Ω	6.6Ω
1.0Ω			

Losses: coupler coil 56.1w, top coil 29.1w, earth 8.6w, mast 4.3w;
 Radiated Power: 1.9

1km	1 N/Mile	50 N/Miles
13.0 Mv/M	7.1 Mv/M	141.3µv/M

Unpacked: 74kg (162.8 lbs); packed 117 kg (257.4 lbs), excluding optional hinged base; hinged base packed 30kg (66 lbs)

UNLESS OTHERWISE SPECIFIED DIMENSIONS : mm ANGLES : d.		NEARSON INC.	
CUSTOMER N°	TITLE : Professional high quality LF/MF guyed antenna system		
FILE N°			
	SIZE A4	NMO-01-0062	REV A Prod. Doc.
	SCALE : N.D.		SHEET 1 of 1